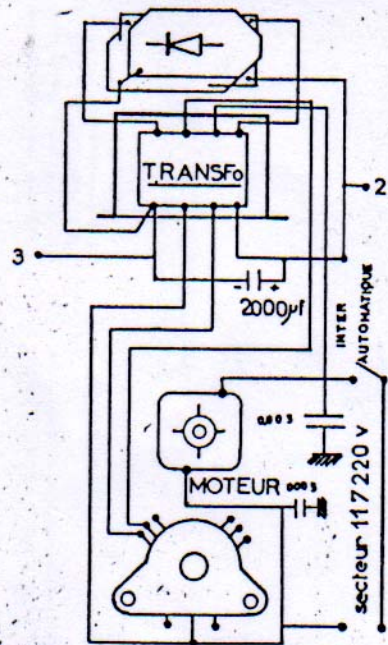
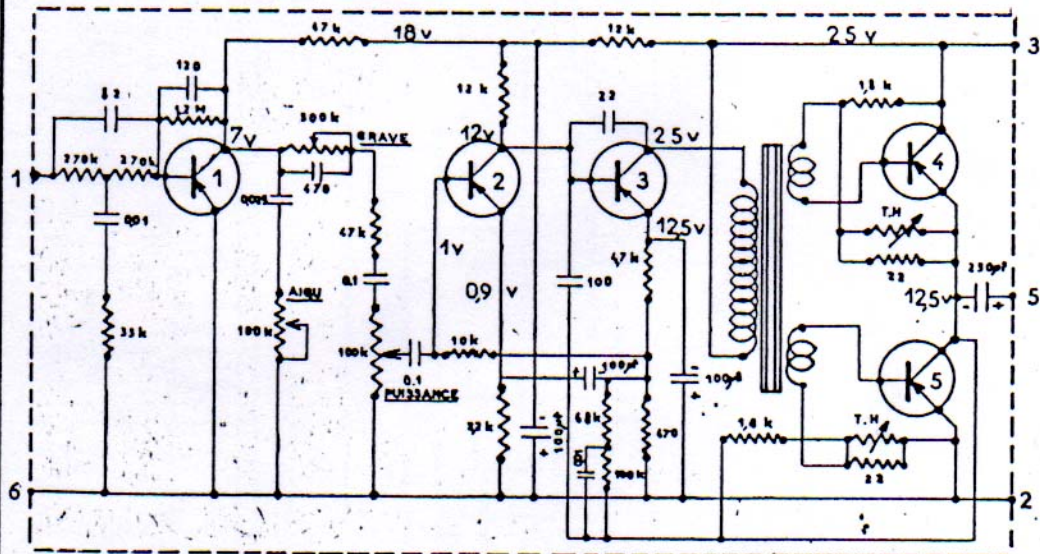


PYGMY RADIO



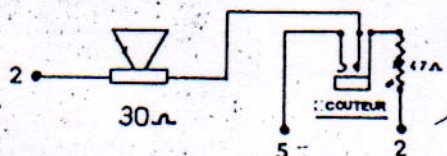
ELECTROPHONE P 101



TYPES TRANSISTORS

- 1 = AC 134 ou 109 ou 323T1
- 2 = AC 134 ou 109 ou 323T1
- 3 = AC 134 ou 109 ou 323T1
- 5:4 = AC 139 ou AC 128

SORTIE H P



CELLULE STEREO

